

FCB-H11-FG Analog

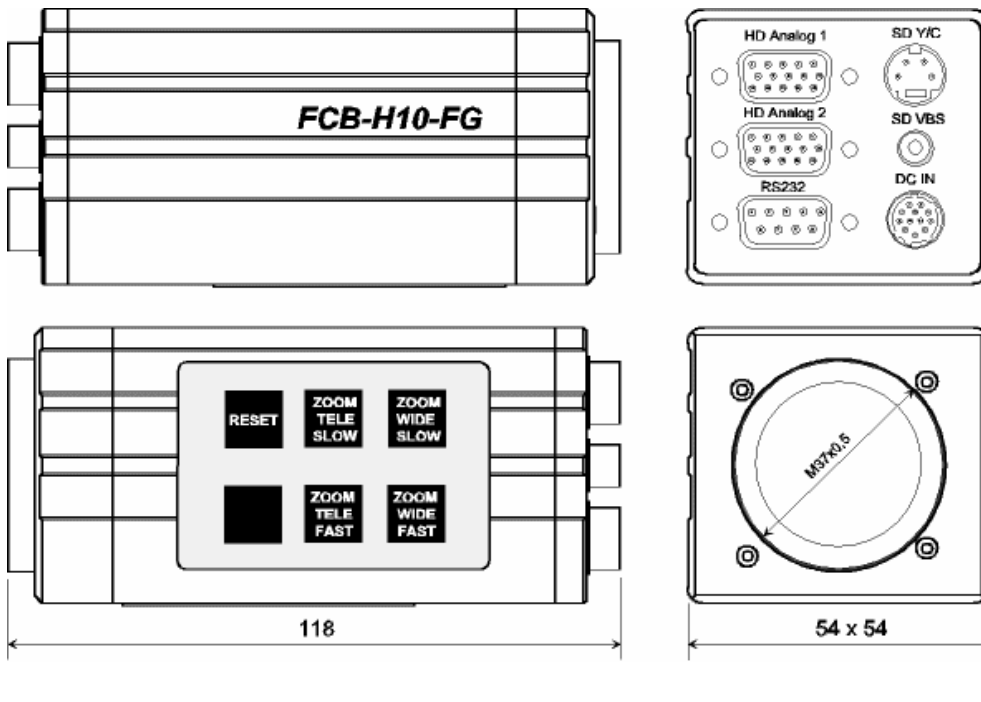
**JenCam**

**1/3" CMOS 2 Megapixel Sensor**  
**Objektiv 10 x optischer Zoom**  
**f=5.1 to 51mm / F1.8 to 2.1**  
**Minimum illumination 12 lx (F1.8)**  
**Video Output HD Analog Components Y/Pb/Pr**  
**FBAS | Y/C**  
**Signalsystem 720/59,94p | 1080/59,94i | NTSC**  
**720/50p | 1080/50i | PAL**  
**Day / Night Mode**

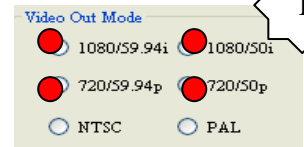


**Full HD 1920 x 1080**

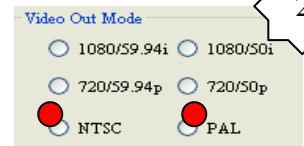
**JenCam GmbH \* Felsbachstraße 9 \* D-07745 Jena**  
**Telefon +49(0)3641-22530 \* Fax +49(0)3641-225319**  
**E-Mail [info@jencam.de](mailto:info@jencam.de) \* Internet <http://www.jencam.de>**



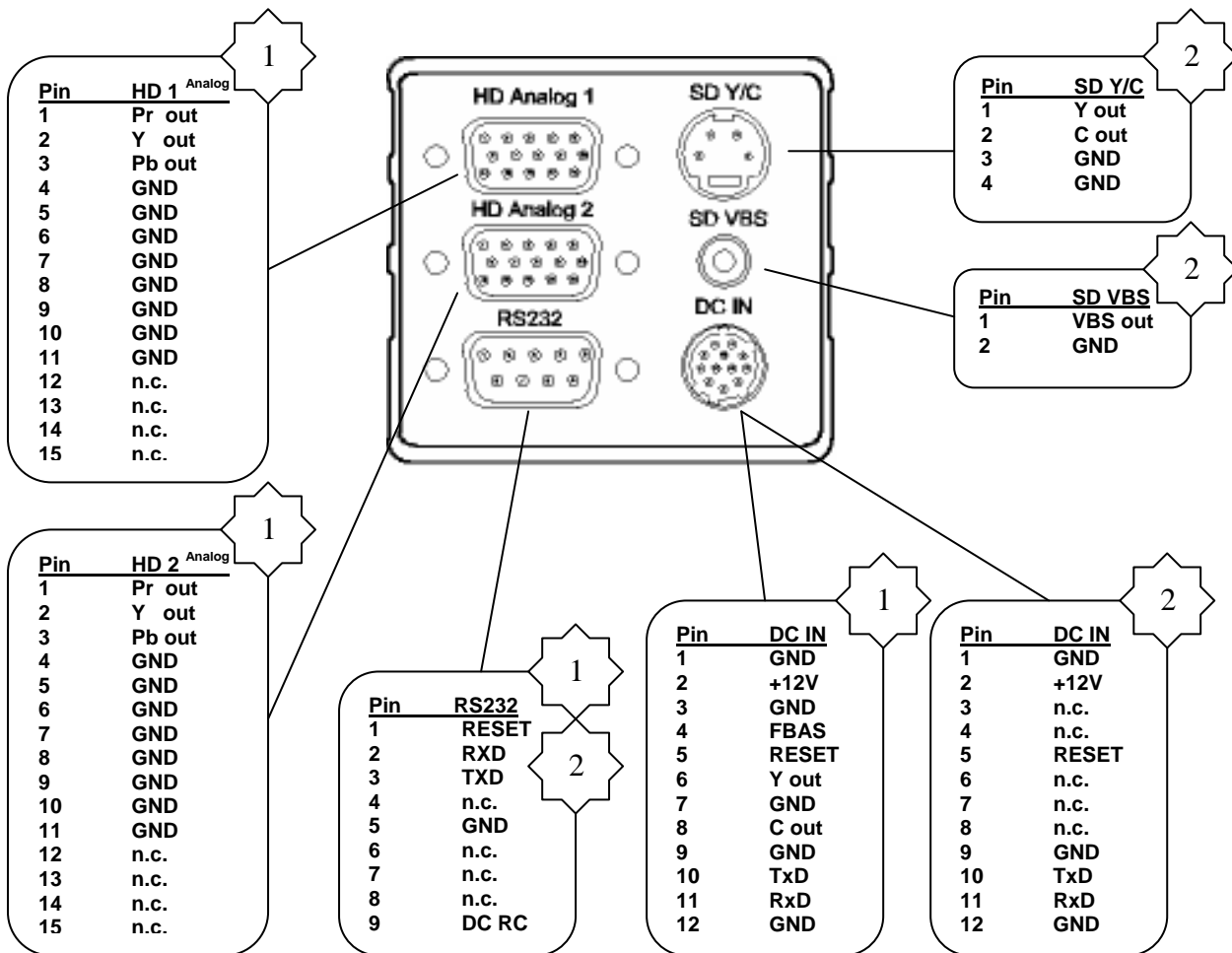
## Camera Settings



## 1080i or 720p



## PAL or NTSC



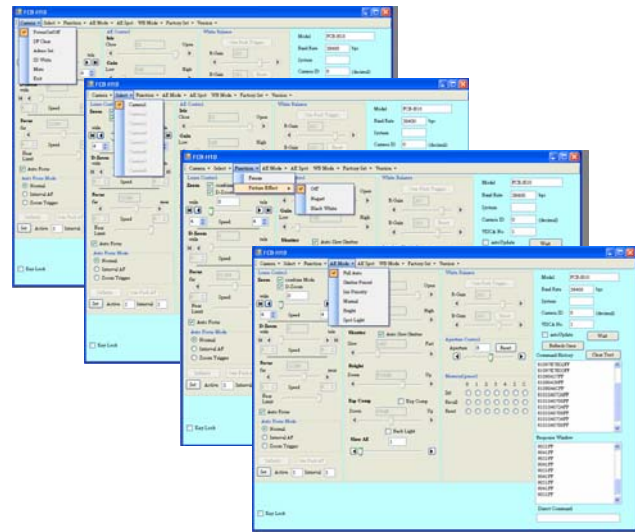
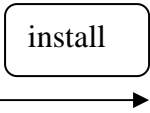
## Parameter

FCB-H11	HD		SD
Image sensor	1/3-type CMOS (IMX010AQZ-13)		
Number of total pixels	2M pixels		
Lens	10 x zoom, f=5.1mm (wide end) to 51 (tele end) F1.8 to F2.1		
Digital zoom	12x (120x with optical zoom)		
Minimum working distance	10 mm (wide end) to 800 mm (tele end)		
Lens distortion	Less than 3% (wide end)		
S/N Ratio	More than 50 dB		
Electronic shutter	½ to 1/10,000s		
ICR	on / off / auto		
Minimum illumination	12 lx (F1.8, 50IRE)		
White Balance	Auto, Manual, One push, Indoor, Outdoor		
Gain control	Auto, Manual (-3dB to +18dB)		
Exposure control	Auto, Manual, Shutter priority, Iris priority, Bright		
Focusing system	Auto, One-push auto, Manual		
Signal system	<b>1080i/59.94</b>	<b>720p/59.94</b>	<b>NTSC CROP/SQUEESE</b>
	<b>1080i/50</b>	<b>720p/50</b>	<b>PAL CROP/SQUEESE</b>
	One mode out of 8 modes can be selected		
Aspect ratio	16:9		4:3/16:9
Clock frequency	55.6875/1.001MHz(59.94) 55.6875MHz(50)	74.25/1.001MHz(59.94) 74.25MHz(50)	NTSC PAL
Video output	HD Analog Component:Y/Pb/Pr HD Digital Data(LVDS):Y/Pb/Pr (8 bit for each channel)		VBS:1.0 Vp-p (Sync Negative) Y/C Output
Sync system	Internal		
Camera control interface	RS232 signal level		
Storage temperature	-40 °C to 85 °C		
Operating temperature	0 °C to 45 °C		
Power consumption	12.0 V DC / 3.8W		
Mass	370g		
Dimensions (W x H x D)	54 x 54 x 118mm		
Lens Adapter Screw	φ37.0mm		

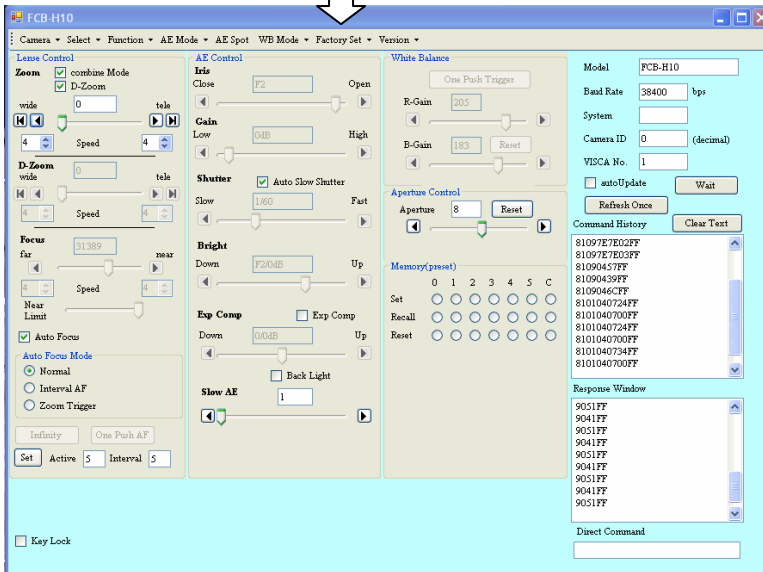
Sony Software form CD

FCB-H11 Software

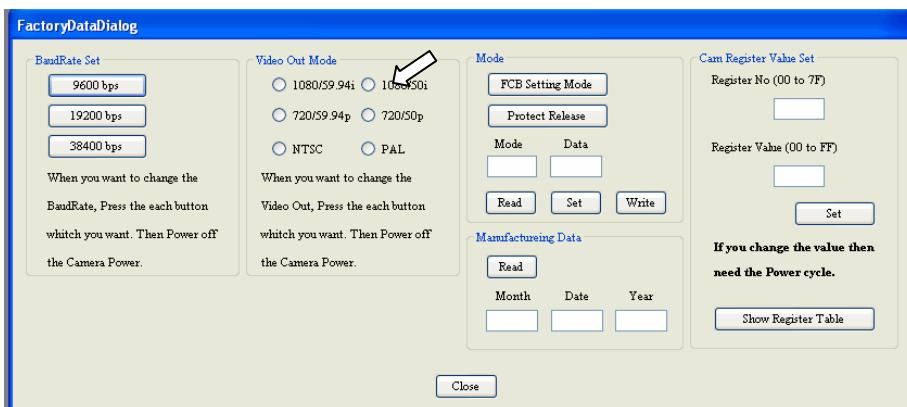
FCB-H10\_0\_0\_0\_1  
 FCB-H10.application  
 FCB-H10\_0\_0\_0\_1.application  
 setup.exe



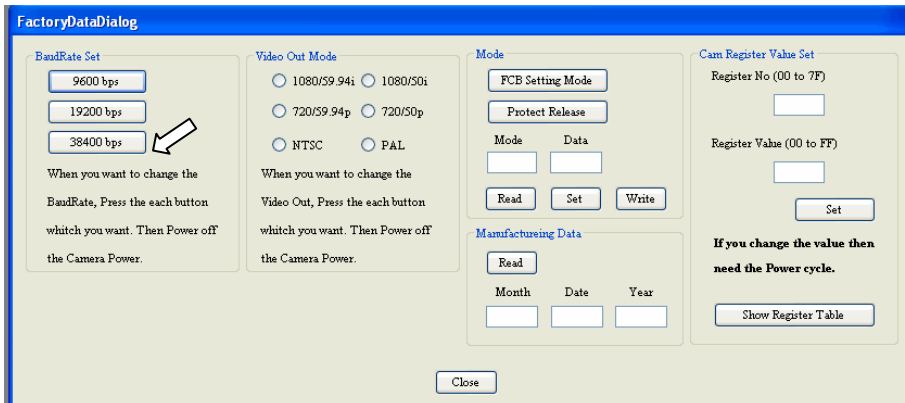
Software FCB-H11



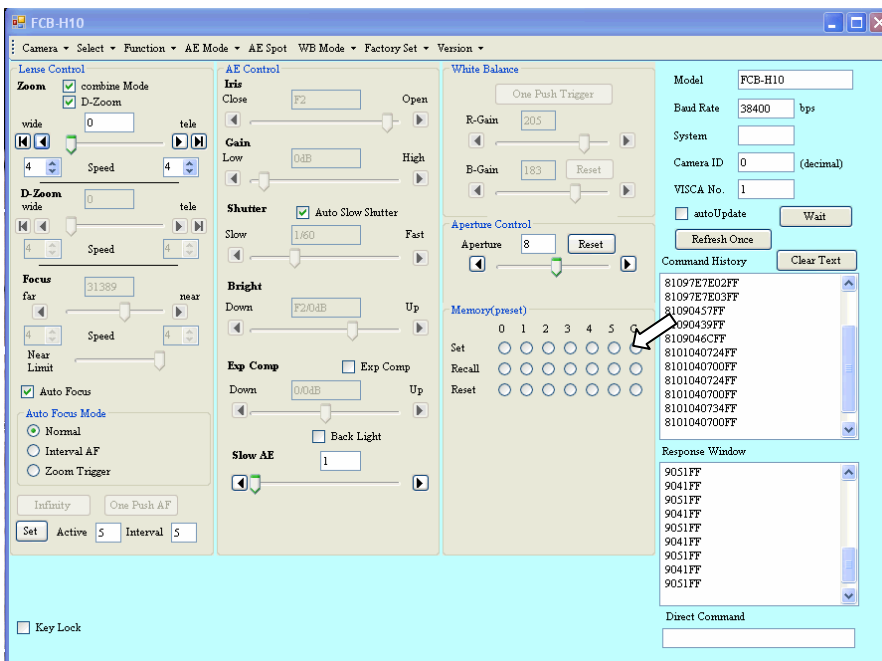
## 1. Factory Set Output Mode – Werkseinstellung 1080/50i



## 2. Factory Set BaudRate - Werkseinstellung 38400 bps



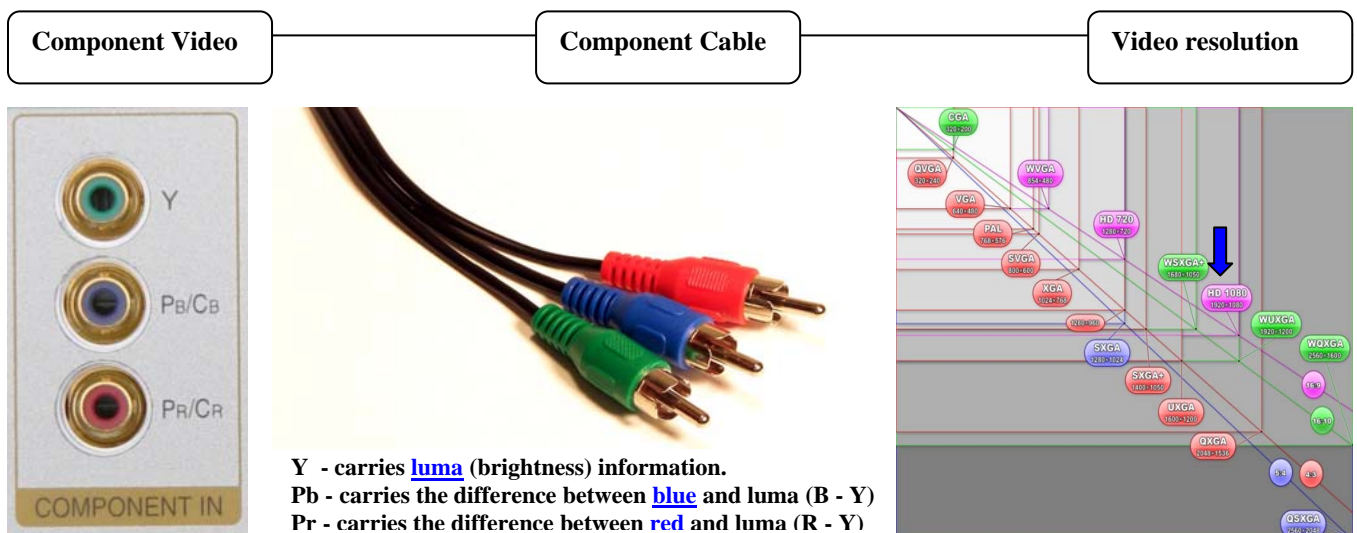
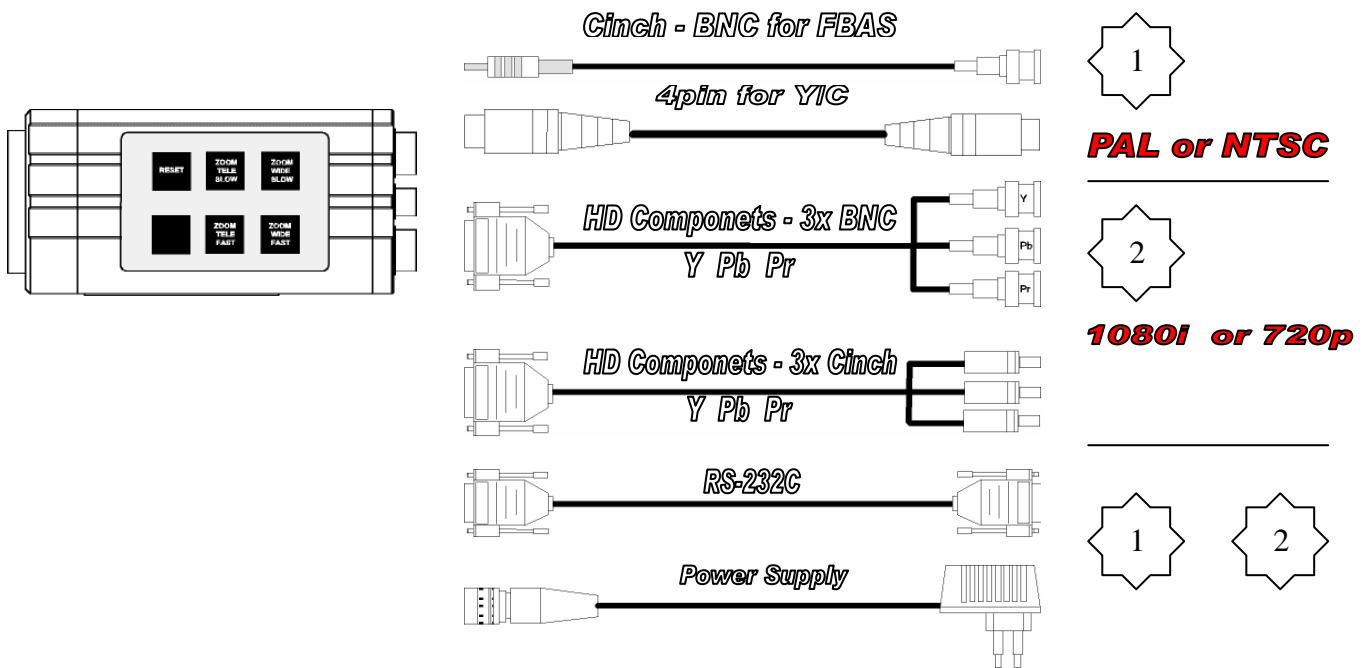
## 3. Parameterspeicherung



Start Parameter abspeichern

- 1- Parameter einstellen
- 2- Parameter mit Set C speichern
- 3- Kamera ausschalten
- 4- Beim Kameraneustart werden die gespeicherten Parameter übernommen

## Connection Diagramm







Power Supply NT8/12  
HR 12VDC  
12pin Connector  
[20052001] Order No. JenCam



Power Supply NT12/15  
HR 12VDC  
12pin Connector  
[20052004] Order No. JenCam



AV-Cable 2m  
[30039078] Order No. JenCam  
AV-Cable 5m  
[30039079] Order No. JenCam  
AV-Cable 10m  
[30039080] Order No. JenCam



RS232-Cable 2m  
[30039006] Order No. JenCam  
RS232-Cable 5m  
[30039007] Order No. JenCam  
RS232-Cable 10m  
[30039008] Order No. JenCam  
RS232-Cable 15m  
[30039047]



RS232-Cable – USB 2m  
[30039081] Order No. JenCam



Remote Control H10  
[30055128] Order No. JenCam

RC-Cable 2m  
[30039006] Order No. JenCam



Macro lenses  
NL +0.5 [10044005]  
NL +1.0 [10044001]  
NL +2.0 [10044002]  
NL +3.0 [10044003]  
NL +4.0 [10044004]

HG Macro lenses  
NL +2.5 [10044030]  
NL +4.0 [10044031]  
NL +6.6 [10044029]  
Order No. JenCam



Wide conversions lens  
x 0,5 [30048109]  
x 0.56 [30048021]  
x 0.7 [30048034]  
x 0,8 [30048035]  
Order No. JenCam

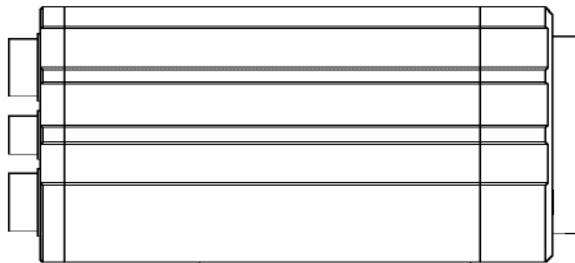
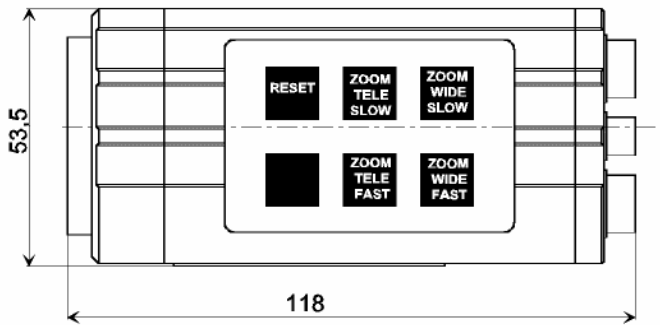
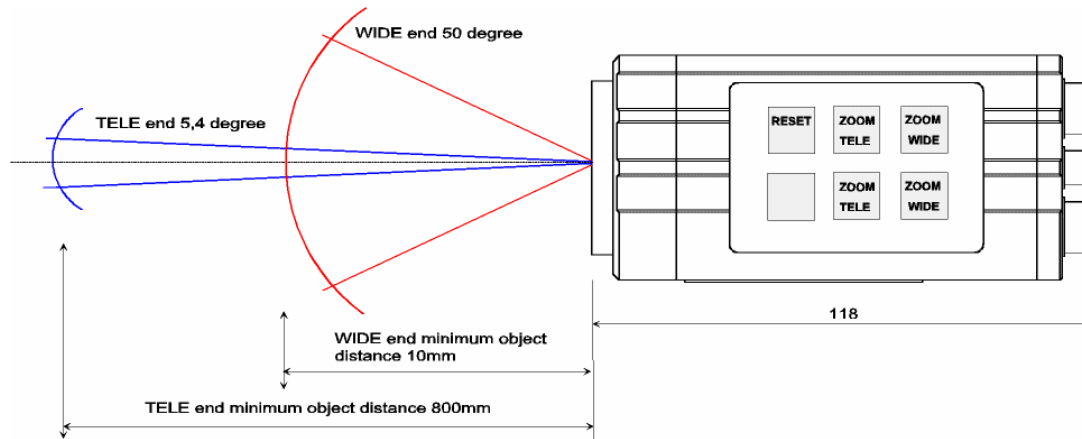
Tele conversions lens  
x 2.0 [10044010]  
Order No. JenCam



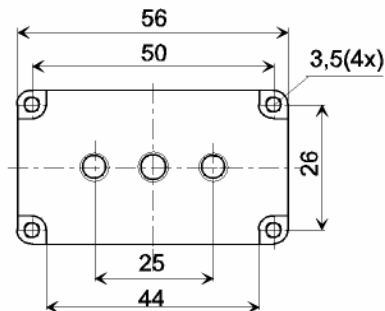
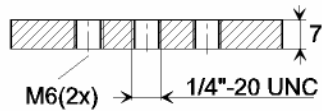
Ring Light White  
RL100W [10115079]  
Order No. JenCam



Halter M37  
HM37 [30093035]  
Order No. JenCam



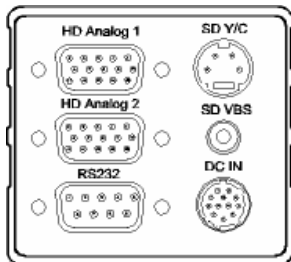
Stativplatte  
30093002





# FCB-H11-FG HD-Analog

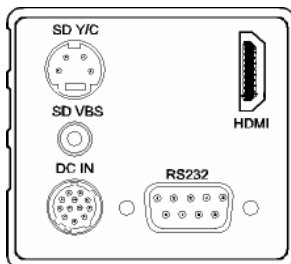
# JenCam



FCB-H11-FG HD-Analog  
HD Y/Pb/Pr



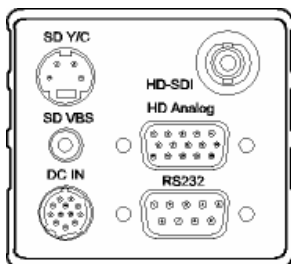
Output Signal  
HD Analog Component Y/Pb/Pr 1  
HD Analog Component Y/Pb/Pr 2  
SD Y/C  
SD FBAS



FCB-H11-FG HDMI/DVI



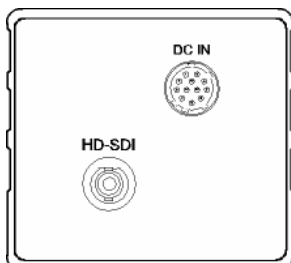
Output Signal  
HDMI  
SD Y/C  
SD FBAS



FCB-H11-FG HD-SDI & Analog  
HD Y/Pb/Pr



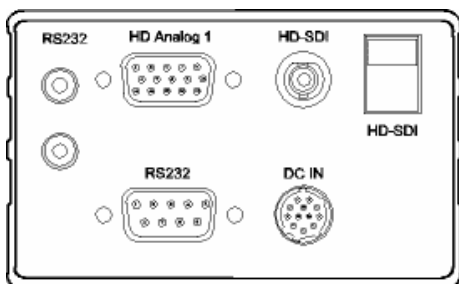
Output Signal  
HD SDI  
HD Analog Component Y/Pb/Pr  
SD Y/C  
SD FBAS



FCB-H11-FG HD-SDI



Output Signal  
HD SDI



FCB-H11-FG HD-SDI-LWL



Output Signal  
HD SDI  
HD SDI LWL  
HD Analog Y/Pb/Pr

FCB-H11-FG HD-Analog

**JenCam**



**JenCam GmbH \* Felsbachstraße 9 \* D-07745 Jena**  
**Telefon +49(0)3641-22530 \* Fax +49(0)3641-225319**  
**E-Mail [info@jencam.de](mailto:info@jencam.de) \* Internet <http://www.jencam.de>**