

FCB-H10-FG HD-SDI

JenCam

1/3" CMOS 2 Megapixel Sensor

Objektiv 10 x optischer Zoom

f=5.1 to 51mm / F1.8 to 2.1

Minimum illumination 12 lx (F1.8)

Video Output HD-SDI

FBAS | Y/C

Signalsystem 720/59,94p | 1080/59,94i | NTSC

720/50p | 1080/50i | PAL



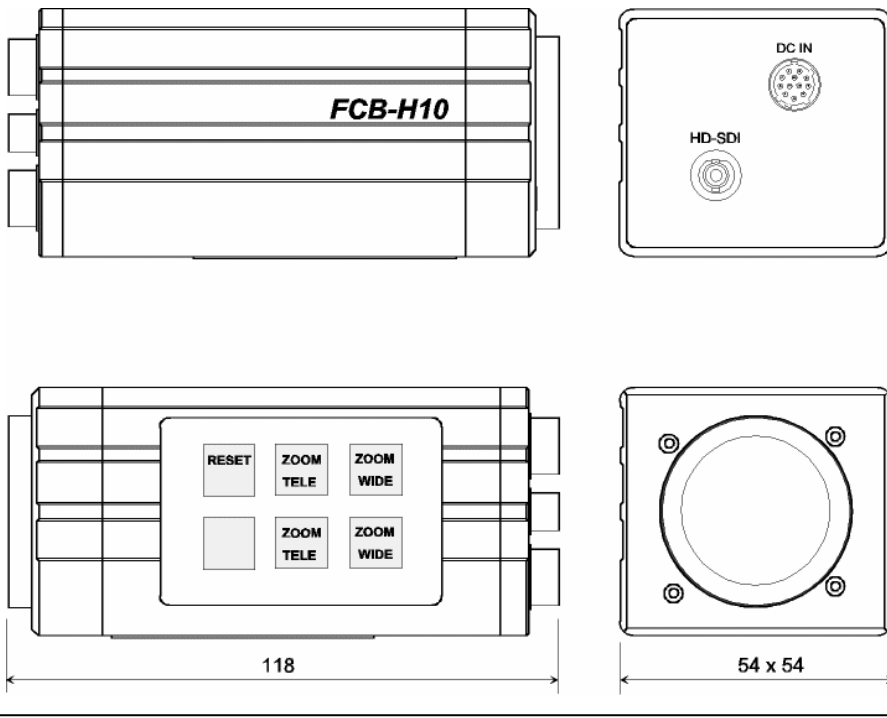
Full HD 1920 x 1080

JenCam GmbH * Felsbachstraße 9 * D-07745 Jena

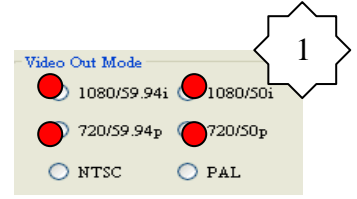
Telefon +49(0)3641-22530 * Fax +49(0)3641-225319

E-Mail info@jencam.de * Internet <http://www.jencam.de>

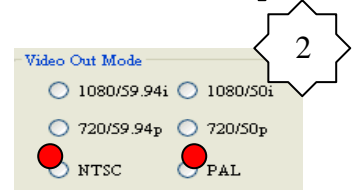
FCB-H10-FG HD-SDI



Camera Settings



1080i or 720p



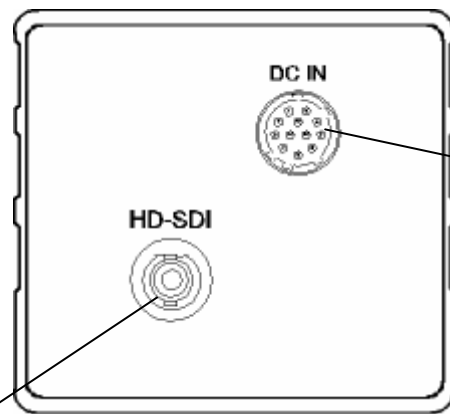
PAL or NTSC

2

Pin	DC IN
1	GND
2	+12V
3	GND
4	FBAS
5	RESET
6	n.c.
7	n.c.
8	n.c.
9	n.c.
10	TxD
11	RxD
12	GND

1

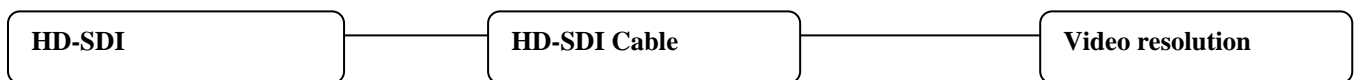
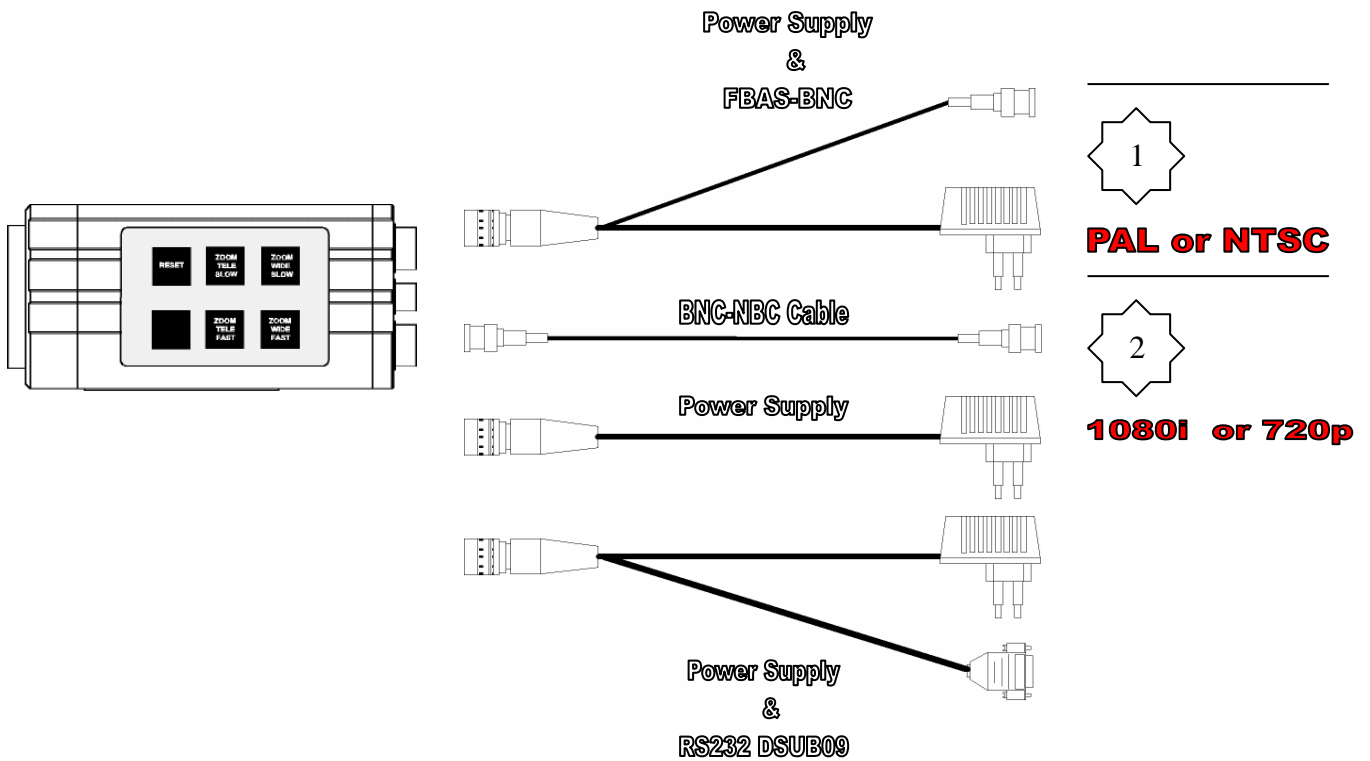
Pin	DC IN
1	GND
2	+12V
3	n.c.
4	n.c.
5	RESET
6	n.c.
7	n.c.
8	n.c.
9	n.c.
10	TxD
11	RxD
12	GND



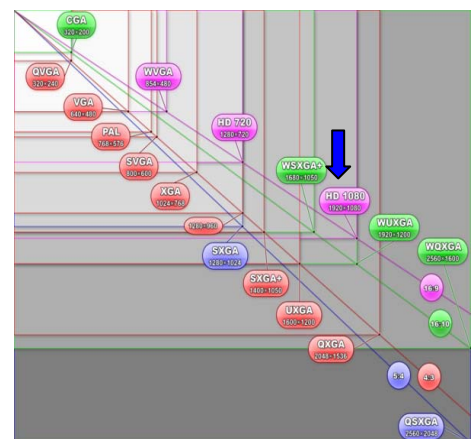
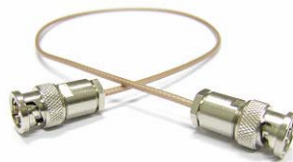
1

Pin	HD-SDI
1	HD-SDI

Connection Diagramm



High Definition Serial Digital Interface
Norm: SMPTE 292M



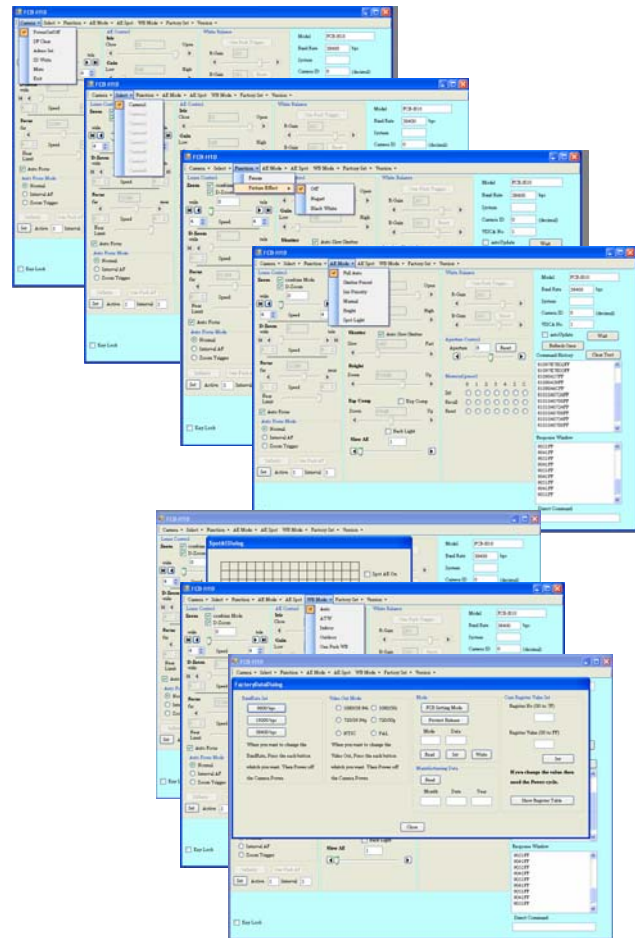
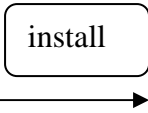
Parameter

FCB-H10	HD		SD
Image sensor	1/3-type CMOS (IMX010AQZ-13)		
Number of total pixels	2M pixels		
Lens	10 x zoom, f=5.1mm (wide end) to 51 (tele end) F1.8 to F2.1		
Digital zoom	12x (120x with optical zoom)		
Minimum working distance	10 mm (wide end) to 800 mm (tele end)		
Lens distortion	Less than 3% (wide end)		
S/N Ratio	More than 50 dB		
Electronic shutter	1/2 t o 1/10,000s		
Minimum illumination	12 lx (F1.8, 50IRE)		
White Balance	Auto, Manual, One push, Indoor, Outdoor		
Gain control	Auto, Manual (-3dB to +18dB)		
Exposure control	Auto, Manual, Shutter priority, Iris priority, Bright		
Focusing system	Auto, One-push auto, Manual		
Signal system	1080i/59.94	720p/59.94	NTSC CROP/SQUEESE
	1080i/50	720p/50	PAL CROP/SQUEESE
	One mode out of 8 modes can be selected		
Aspect ratio	16:9		4:3/16:9
Clock frequency	55.6875/1.001MHz(59.94) 55.6875MHz(50)	74.25/1.001MHz(59.94) 74.25MHz(50)	NTSC PAL
Video output	HD Analog Component:Y/Pb/Pr HD Digital Data(LVDS):Y/Pb/Pr (8 bit for each channel)		VBS:1.0 Vp-p (Sync Negative) Y/C Output
Sync system	Internal		
Camera control interface	RS232 signal level		
Storage temperature	-40 °C to 85 °C		
Operating temperature	0 °C to 45 °C		
Power consumption	12.0 V DC / 3.8W		
Mass	370g		
Dimensions (W x H x D)	54 x 54 x 118mm		
Lens Adapter Screw	φ37.0mm		

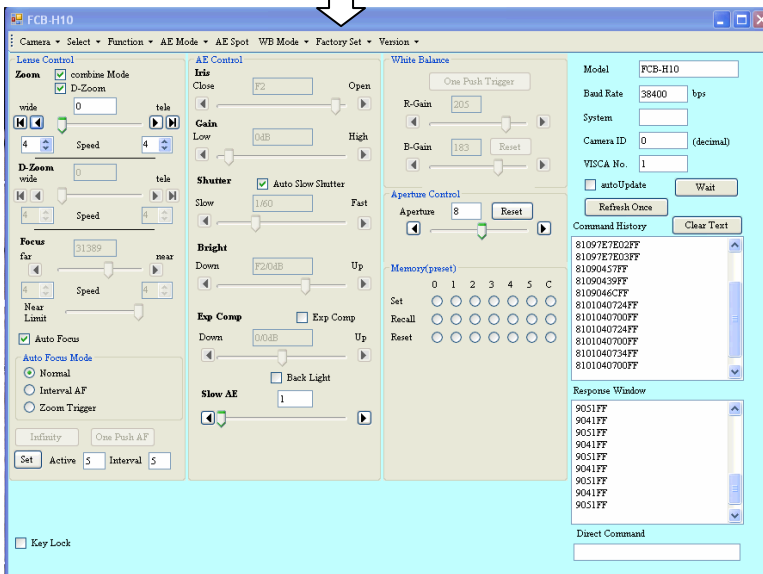
Sony Software form CD

CD\JenCam FCB-H10\Software

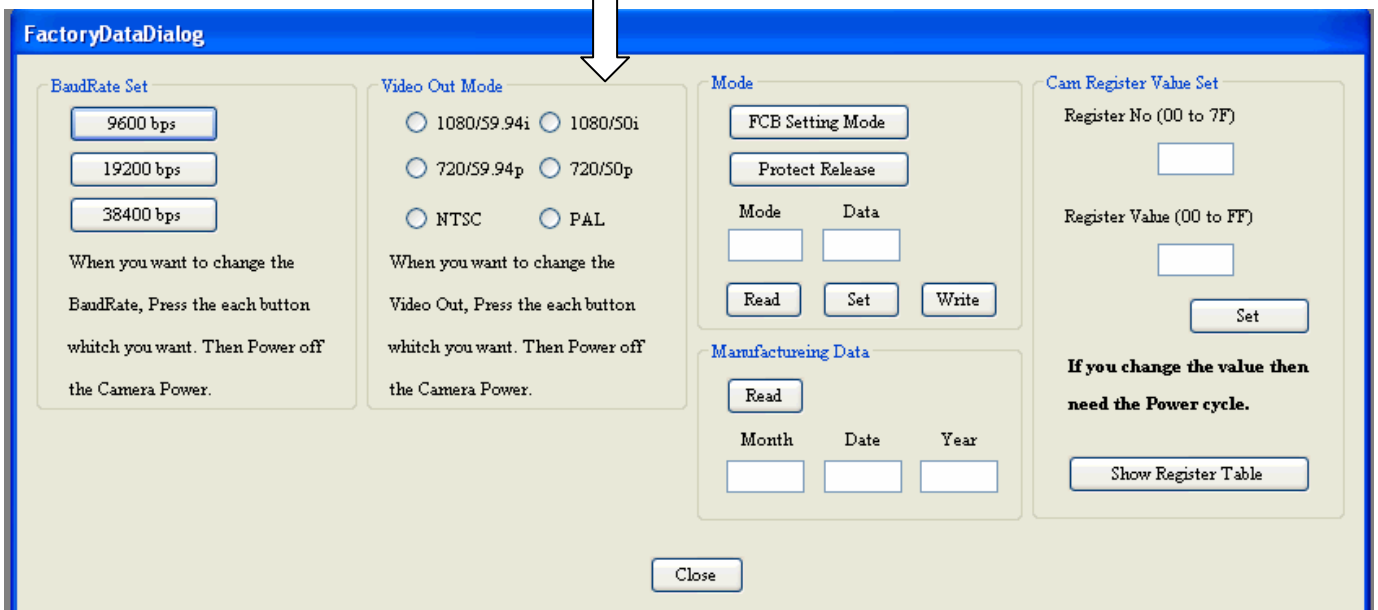
FCB-H10_0_0_0_1
 FCB-H10.application
 FCB-H10_0_0_0_1.application
 setup.exe



Software FCB-H10



Factory Set Output Mode





Power Supply NT8/12
HR 12VDC
12pin Connector
[20052001] Order No. JenCam



Power Supply NT12/15
HR 12VDC
12pin Connector
[20052004] Order No. JenCam



BNC-Cable 2m
[30039036] Order No. JenCam



BNC-Cable 5m
[30039010] Order No. JenCam



BNC-Cable 10m
[30039031] Order No. JenCam



Power Supply NT8/12-Y
HR 12VDC
12pin Connector & BNC
[20052002] Order No. JenCam



Power Supply NT8/12-Y
HR 12VDC
12pin Connector & DSUB9
[20052044] Order No. JenCam



Remote Control H10
[30055128] Order No. JenCam



RC-Cable 2m
[30039006] Order No. JenCam



Full HD Monitor
LMD-2450W
[20052000]
Order No. JenCam



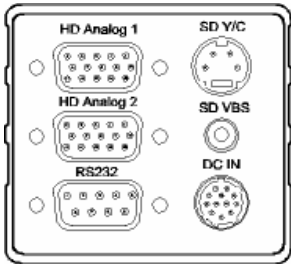
HD-Recorder
PDW-75MD
[20052001]
Order No. JenCam
**XDCAM HD Medical
Recording Deck**



Macro lenses
NL +0.5 [10044005]
NL +1.0 [10044001]
NL +2.0 [10044002]
NL +3.0 [10044003]
NL +4.0 [10044004]
Order No. JenCam



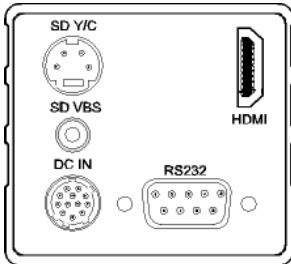
Wide conversions lens
x 0.55 [30048021]
x 0.7 [30048034]
x 0,8 [30048035]
Order No. JenCam
Tele conversions lens
x 2.0 [10044010]
Order No. JenCam



**FCB-H10-FG Analog
HD Y/Pb/Pr**



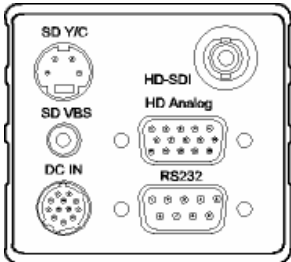
Output Signal
 HD Analog Component Y/Pb/Pr 1
 HD Analog Component Y/Pb/Pr 2
 SD Y/C
 SD FBAS



FCB-H10-FG HDMI/DVI



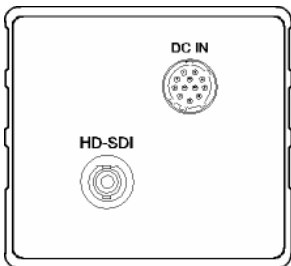
Output Signal
 HDMI
 SD Y/C
 SD FBAS



**FCB-H10-FG HD-SDI & Analog
HD Y/Pb/Pr**



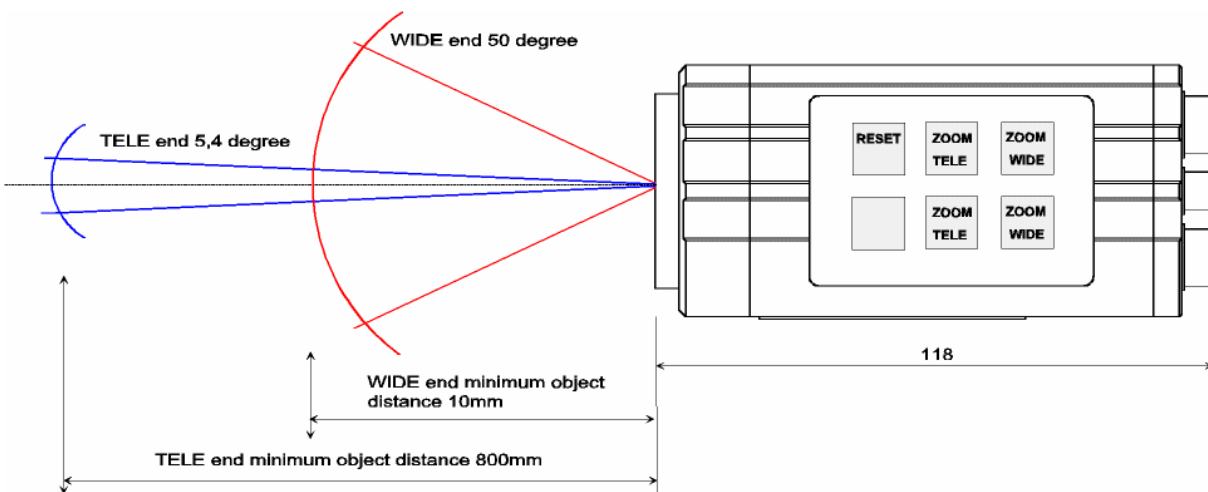
Output Signal
 HD SDI
 HD Analog Component Y/Pb/Pr 2
 SD Y/C
 SD FBAS

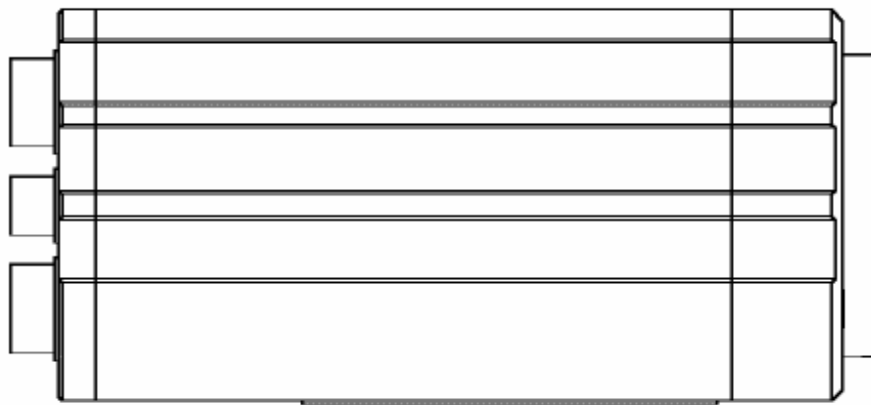
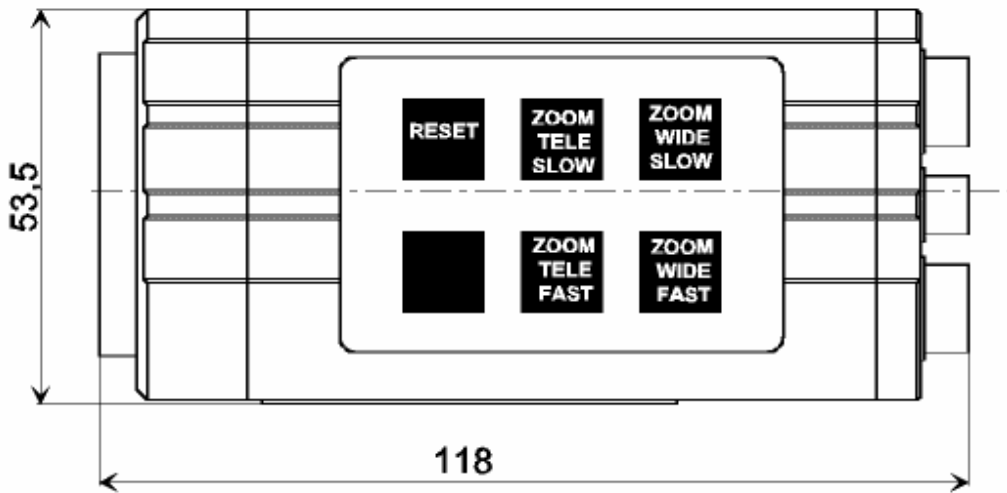


FCB-H10-FG HD-SDI



Output Signal
 HD SDI





Stativplatte
30093002

