

Zoom Kamera Module 21Z30S











10027201

Zoom Camera High Definition 30x Zoom Module

1/2.8" Zoom Camera
30 x Optical Zoom
12 x Digital Zoom
Effective Pixels MP
Minimum illumination
Signal Modi

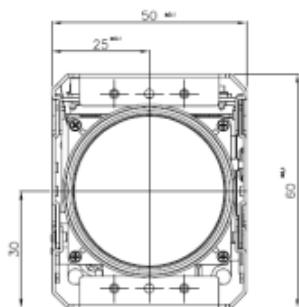
Sony Starvis CMOS sensor
 f4.7 to 141 mm
 2.1
 0.005 lx
 1080/60p, 1080/50p, 1080/30p,
 1080/50i, 1080/60i
 720/60p, 720/50p, 720/30p, 720/25p
 PAL/NTSC
 LVDS, HD-SDI
 VBS
 VISCA, Pelco-D, Pelco-P protocol

HD Output
SD Output
Control Interface
Day & Night (ICR)
Advanced 2D and 3D Noise Reduction
Digital Image Stabilizer
Programmable Factory Preset
High performance Digital Signal Processor
WDR function
HLC
Motion Detection

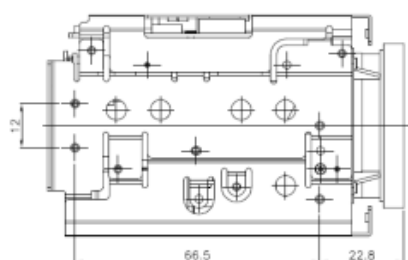
 CMOS 1/2.8"	 1080p 60FPS	 DIGITAL SIGNAL	 HD-SDI	 WDR^{REAL} 30FPS
 AUTOMATIC FOCUS	 OPTICAL ZOOM 30x	 DNR 3	 DSS	 CVBS



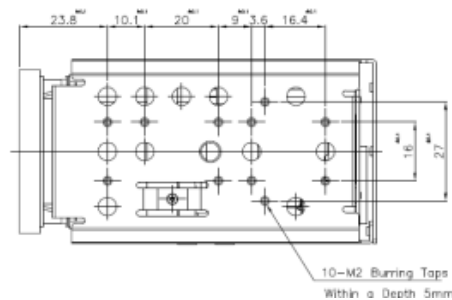
Dimensions [mm]



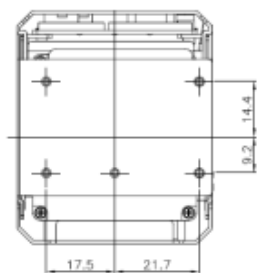
Front



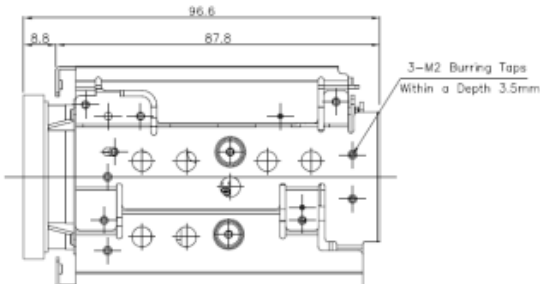
Left Side



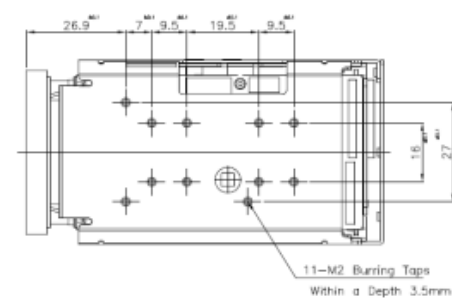
Bottom



Back



Right Side



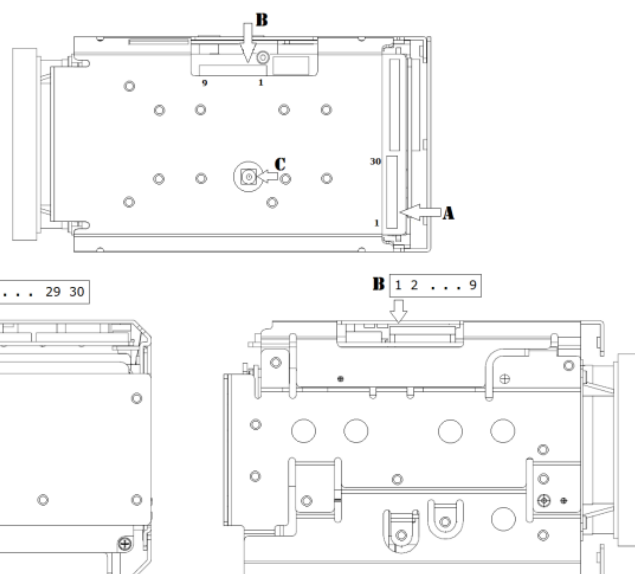
Top

Zoom Kamera Module 21Z30S

10027201

Pin Assignment

A KEL USL00-30L	B Molex 52271-0979
1 TXOUT3+ (LVDS)	1 RXD (UART input) CMOS 5V (High Min. 2.5V)
2 TXOUT3- (LVDS)	2 TXD (UART output) CMOS 5V (High Min. 4.5V)
3 TXCLKOUT+ (LVDS)	3 GND
4 TXCLKOUT- (LVDS)	4 DC power input 9 ~ 15VDC
5 TXOUT2+ (LVDS)	5 GND
6 TXOUT2- (LVDS)	6 CVBS Output
7 TXOUT1+ (LVDS)	7 GND
8 TXOUT1- (LVDS)	8 N.C
9 TXOUT0+ (LVDS)	9 N.C
10 TXOUT0- (LVDS)	
11 GND	
12 TXD (UART output) High Min. 4.5 V	
13 RXD (UART input) High Min. 2.5 V	
C MMCX HD-SDI	
14 DC (9 ~ 15 V)	
15 DC (9 ~ 15 V)	
16 DC (9 ~ 15 V)	
17 DC (9 ~ 15 V)	
18 DC (9 ~ 15 V)	
19 KEY input	
20 GND	
21 TXOUT7+ (LVDS)	
22 TXOUT7- (LVDS)	
23 TXOUT6+ (LVDS)	
24 TXOUT6- (LVDS)	
25 CVBS output (optional)	
26 EXT. Reset: Reset Low (GND), Normal Open (3.3 V)	
27 XOUT5+ (LVDS) for Dual out mode	
28 TXOUT5- (LVDS) for Dual out mode	
29 TXOUT4+ (LVDS) for Dual out mode	
30 TXOUT4- (LVDS) for Dual our mode	



Specifications

Image Sensor	1/2.8" Sony Stavis CMOS Sensor	Gain Control (AGC)	Off / On
Scanning System	Progressive Scan	Shutter Speed	1/30 (25) ~ 1/10.000 sec
Sync. System	Internal	WDR/BLC	Off / WDR / BLC / HCL
Resolution	Digital: 1080p/60(50)fps, 1080p/30(25)fps, 720p/60(50)fps, 720p/30(25)fps Analog: PAL/NTSC	Day & Night	AGC /TDN (ICR)
Min. Illumination	Day 0.05 lux, Night 0.005 lux, DSS 0.0005 lux	White Balance	Auto / One Push / Manual / Indoor / Outdoor
Video Output	HD: LVDS, HD-SDI, SD: CVBS	HCL	Off / On / Night Only
Lens Type	x30 Day & Night Zoom Lens	Mirror	Off / H / V / H&V
Zoom Ratio	Optical x30, Digital x12 Zoom	Communication	Baud Rate: 2400 / 4800 / 9600 / 19200 / 38400 / 57600 / 115200
Focal Length	f = 4.1 -141 mm	Language	English
Aperture Ratio	F1.5 (wide) F4.0 (tele)	Power Source	7 to 15 V DC
Angle of View (H)	60.5° (wide), 2.3 (tele)	Power Consumption	Max 5 W
Focus	Near/Far, Auto/Manual/One Push	Power Input	Connector
Mode	Auto / One Push / Manual	Video Output	Connector
Min. Distance	0.5 m (wide), 1.5 m (tele)	Storage Temperature	-20 ~ +60°C (Humidity: 0 % RH ~ 90 % RH)
Lens Refresh	One Push / 1 ~ 10 Day	Operating Temperature	-10 ~ +50°C (Humidity: 0 % RH ~ 90 % RH)
Digital Zoom	Off/ MAX x2 ~ x12	Dimensions	50(W) x 60(H) x 96.6(D)
Exposure	Auto / Iris.P / Shut.P / Manual	Weight	250 g